



O'MALLEY
H O M E S



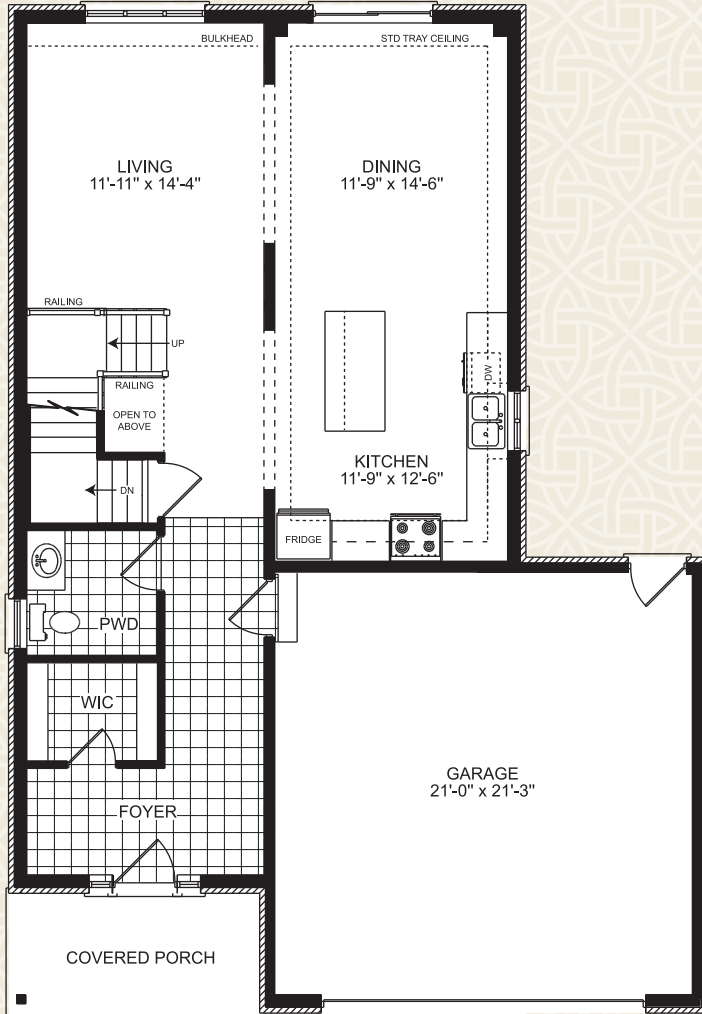
WESTMOUNT

2050 Sq.Ft

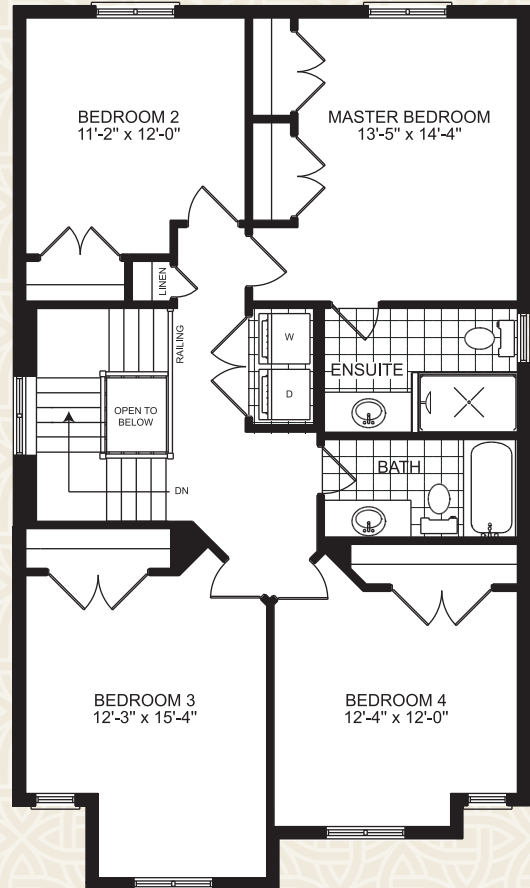
4 Bedroom 2.5 Bath

WESTMOUNT

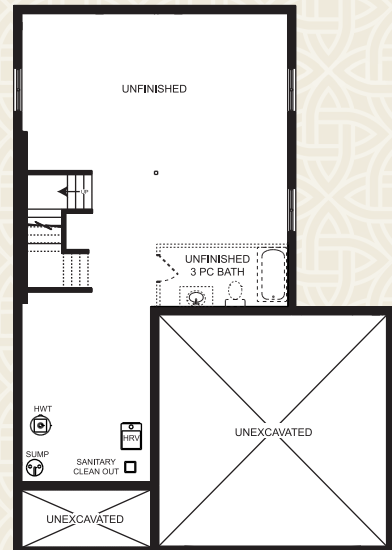
4 Bedroom 2 Bed Opt. 2.5 Bath
2050 Total Finished Area



MAIN FLOOR 950 SQ.FT.



SECOND FLOOR 1100 SQ.FT.



BASEMENT

Another Fine Site by:

